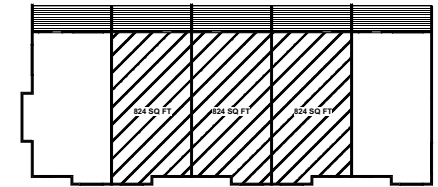




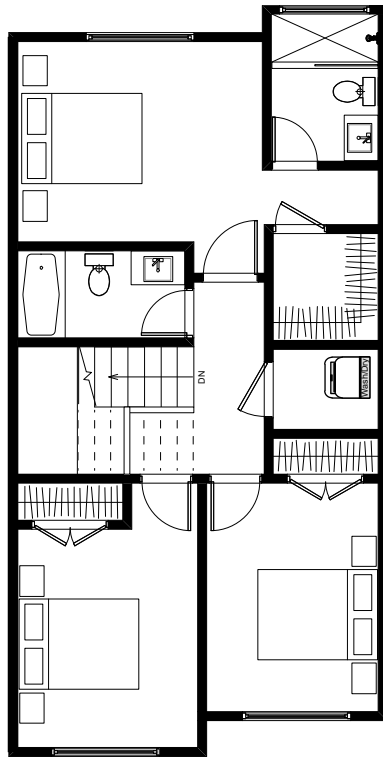
# 3-STOREY MIDDLE UNITS

623 CROWN ISLE BLVD  
COURTENAY, BC

**PLAN: MAHONY**  
**Sq. Ft.: 2,084**  
**Bedrooms: 3**  
**Bathrooms: 3.5**  
**Level: 3-Storey**  
**Garage: Single**

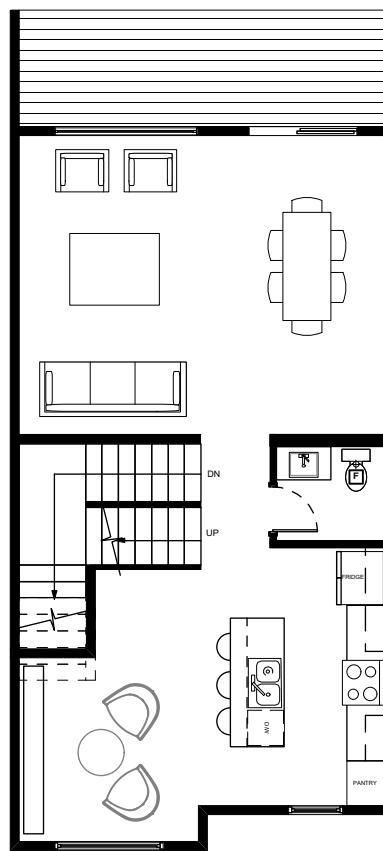


**KEY PLAN**



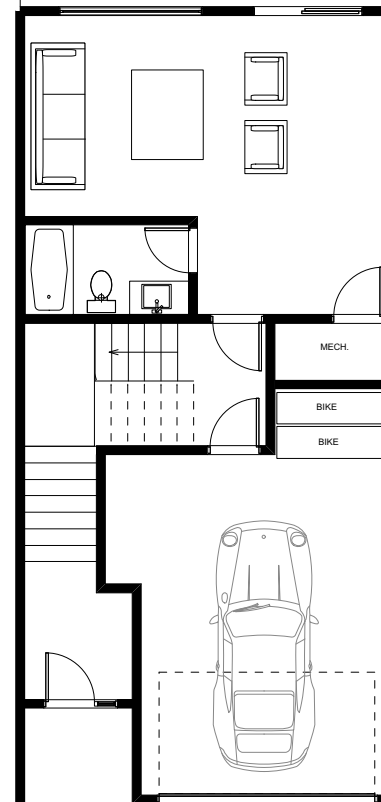
**UPPER LEVEL FLOOR PLAN - 776 sq ft**

SCALE: 3/32" = 1'-0"



**MAIN LEVEL FLOOR PLAN - 775 sq ft**

SCALE: 3/32" = 1'-0"



**LOWER LEVEL FLOOR PLAN - 533 sq ft**

SCALE: 3/32" = 1'-0"



Welcome to the BLVD. Ask for more info on: Appliance / Spec sheets / Mortgages / Westurban / Sotheby's / Comox Valley  
 Phone: 778-585-5010 or visit [theblvd.ca](http://theblvd.ca)

The Developer reserves the right to modify or change plans, specifications, features and prices without notice. Materials may be substituted with equivalent or better at the developer's sole discretion. Variable conditions occur throughout the development. All dimensions and sizes are approximate and are based on architectural measurements. This is not an offering for sale and such offer can only be made by Disclosure Statement E.& O: \_\_\_\_\_

