



# ***SPEC BOOK***

## **Luxury Townhouses in the Heart of the Comox Valley**



The developer reserves the right to modify or change plans, specifications, features and prices without notice. Materials may be substituted with equivalent or better at the developer's sole discretion. Variable conditions occur throughout the development. All dimensions and sizes are approximate and are based on architectural measurements. This is not an offering for sale and such offer can only be made by Disclosure Statement and CPS

# **STANDARD APPLIANCES**

# Samsung® French Door Refrigerator with Twin Cooling Plus Model#:RF23R6201SR/AA

**Twin Cooling Plus™** optimizes the temperature and humidity in the fridge and freezer with an independent cooling system. It preserves food in the optimal conditions and protects its original flavour and aroma by preventing odours from mixing.

**Modern Look Design** - Enjoy a sleek and simple design. The sleek edge doors have a sophisticated and timeless style that is accentuated by a minimalist ice and water dispenser and New Edge Handles. These elements blend seamlessly and harmoniously with any kitchen interior.



**CoolSelect Pantry™** - Enjoy the ultimate in storage flexibility. With a touch, you can store various foods and drinks at an optimal temperature in the CoolSelect Pantry™. It has 3 temperature settings that are ideal for keeping beverage cool, protecting the taste and texture of deli food, and chilling wine.

## **Ice Max**

Get more ice super fast\* and keep your freezer looking neat. While Ice Max's slim and compact design provides more storage space, it can still produce up to 5.2lbs (2.4kg) of ice a day and store up to 2.7lbs (1.3kg) of ice.

## **Built-In Wi-Fi**

Monitor your refrigerator at your convenience. With the embedded Wi-Fi, you can control it using SmartThings App on your smartphone\*. Easily check the temperature, get alerts if the door is left open and even read or write memos

## **Fingerprint-Resistant Stainless Steel -**

Its fingerprint-resistant coating prevents it from being covered in smudges.

## **EZ-Open™ Handle**

This specially designed handle allows for easy opening and closing of a fully loaded freezer, containing a filtered ice maker. The low-profile handle design lifts up and glides out the drawer effortlessly.

## **Energy Star**

Certified that is Eco-friendly and energy efficient

## **LED Lighting**

High-Efficiency LED Lighting designed to beautifully light up the interior of your fridge

# Samsung®

## 5.8 cu. ft. Gas Range With 5 Burner Stove

### Top Model #: NX58H5600SS



### **Cooks much more, much larger**

The Samsung Gas Range has a massive 5.8 cu. ft. capacity oven – the largest on the market. So, if you're preparing a meal for a large family gathering or party, you can cook multiple dishes at once, like trays of cookies or various casserole dishes. And it can easily accommodate large items, like a big roast or holiday turkey.

### **Perfectly powerful and flexible cooking**

The Samsung Gas Range features a five burner cooktop for the ultimate flexibility, as you can easily cook multiple dishes using different-sized pans. The intense heat of a 17K Power Burner reduces cooking times and is ideal for sautéing, searing and boiling water in a flash. And a large center oval burner provides even heating over large areas, so it's perfect for griddle cooking.

### **STYLISH AND PROFESSIONAL**

The freestanding Samsung Gas Range's elegant design lets you easily upgrade your kitchen decor and infuse it with a real premium style. The harmonious combination of its striking stainless steel chassis, accentuated with diecast knobs, wide oven door and the brilliant black enamel finish of the five-burner cooktop creates a truly professional look that you'd normally only get with a high-end, built-in appliance.

### **NO MORE LIFTING - SIMPLY SLIDE!**

The Samsung Gas Range features an Endless Rail Grate that lets you move your cookware easily and safely. Even the heaviest pots and pans will slide along its seamless rails, without struggling to lift them. Simple indicator marks also show that they're properly centered over the optimum heat. And the whole grate can be easily cleaned in a dishwasher.

The developer reserves the right to modify or change plans, specifications, features and prices without notice. Materials may be substituted with equivalent or better at the developer's sole discretion. Variable conditions occur throughout the development. All dimensions and sizes are approximate and are based on architectural measurements. This is not an offering for sale and such offer can only be made by Disclosure Statement and CPS.

# Samsung®

## 24" Built-In Rotary Dishwasher with StormWash - Stainless Steel

### MODEL #: DW80K5050US / AC

#### StormWash™

Uses a powerful rotating spray to clean at every angle and reach those hard-to-clean places. This is along side the digital leak sensor, hard food disposer and hidden display.

#### More flexibility, more dishes

A FlexLoad™ Rack makes it easy to fit in various shapes and sizes of dish. Its tines can be removed or adjusted, the upper rack moves up or down and a new lower rack handle design means less bending.



#### Auto opens to dry faster

Enjoy sparkling clean dishes every time with the 'AutoRelease™ Dry' feature. At the end of a cycle it automatically opens the door to allow steam to escape, while a fan creates a curtain of air to protect your counter.

#### Cleans various dishes

The StormWash™ heavy-duty wash system gets the messiest pots and pans clean without pre-washing. An extra spray jet blasts water from every angle to clean heavily soiled dishes of various shapes and sizes.

#### ENERGY STAR® CERTIFIED

ENERGY STAR® certified models exceed government standards to help save money on your utility bills.



The developer reserves the right to modify or change plans, specifications, features and prices without notice. Materials may be substituted with equivalent or better at the de-veloper's sole discretion. Variable conditions occur throughout the development. All dimensions and sizes are approximate and are based on architectural measurements. This is not an offering for sale and such offer can only be made by Disclosure Statement and CPS.

# Samsung®

## 7.5 Cu. Ft. Electric Dryer - White

### MODEL #: DVE45T6005W/AC

#### Steam Sanitize+

Helps remove wrinkles, odors, and static

#### Sensor Dry

Automatically adjusts the time and temperature of the drying cycle, conserves energy, and helps prevent damage to your clothes from excess heat

#### SmartCare

Detects any technical problems by running a quick diagnosis via a smartphone app. After drying finishes, the moisture sensor automatically turns the appliance off to save energy and protect your laundry from any heat damage. Digital controls make this appliance easy to control and monitor



#### Voluminous and convenient

Vented-type electric dryer helps you dry your clothes efficiently and quickly. Adjust the heat with 5 handy temperature settings. Stainless steel, plastic, and metal construction with a powder-coated drum ensures longevity.

#### 7.5 CU. FT. CAPACITY

Capacity of 7.5 cu. ft. can handle larger loads, saving you time and effort. 10 different drying cycles help you make sure everything comes out perfectly dry, whether it's a delicate garment, a pair of jeans, or heavier bedding

#### ENERGY STAR® QUALIFIED

ENERGY STAR® qualified models exceed government standards to help conserve natural resources and save money on your utility bills.

# Samsung®

## 4.2 cu. ft. Front Load Washer in White

### MODEL #: WF45T6000AW / US

#### 4.2 cu. ft. Capacity

Washer capacity has a direct impact on how much time you spend doing laundry. Greater tub size means fewer loads, and fewer loads means more time doing other things you love. With a washer capacity of 4.2 cu. ft. – or 2.8 laundry baskets – you'll save up to 3 hours on laundry every week.\*

#### VRT™ Technology

Samsung's patented VRT™ technology reduces noise to an incredibly low level. Its innovative tub design balances heavy loads quietly and with ease. Upstairs laundry has never been less obtrusive – run your washer upstairs while your children sleep.



#### Self Clean+

Keeps your washer drum fresh and clean by using a combination of powerful water jets and high spin speeds to remove dirt and bacteria. Self Clean+ also sends reminders to clean the drum every forty wash cycles.

#### ENERGY STAR® CERTIFIED

ENERGY STAR® certified models exceed government standards to help conserve natural resources and save money on your utility bills.

#### Smart Care

Skip customer service and troubleshoot issues straight from your smartphone. Smart Care interacts with your washer and dryer to perform an immediate diagnosis and offer quick solutions.\*

#### Diamond Drum Interior

The diamond drum interior helps extend clothing life by treating fabrics gently.



# **UPGRADE APPLIANCES**

# Samsung® Counter depth 4-Door, French Door with Twin Cooling Plus (Stainless Steel) MODEL#: RF24R7201SR / AA



## **FlexZone**

Store different foods and drinks at an optimal temperature, so items stay fresh and tasty. The FlexZone™ has four settings that are ideal for preserving meat and fish, storing deli foods, chilling wine or cooling beverages. A Smart Divider can be locked in place to organize items efficiently.

## **Maintains optimal cooling for fresh and frozen foods**

Twin Cooling Plus System boasts 2 evaporators and a single compressor to control the fridge and freezer temperatures separately. Cool Select Zone lets you utilize the temperatures to suit your needs

## **More than enough room for family-sized food storage**

36" French door refrigerator boasts a roomy 23 cu. ft. interior that's ideal for families, giving them plenty of room to keep fresh and frozen foods on hand for meals and snacks

Freestanding design offers simple installation for a quicker, easier way to update your kitchen

## **Loaded with convenient features to make your life easier**

Counter-height middle drawer is perfect for quickly accessing items you use the most. High-efficiency LED lighting is brighter and softer, perfectly illuminating the interior so you can see everything for easier access. Easy-to-grip handles open the large drawers with a gentle pull. Water filtration keeps crisp, clean water and ice easily accessible

**Ice Master** design allows for extra grocery storage while still producing up to 10lb. of ice per day  
Smart Divider separates items within the drawer creating convenient compartments

## **EVEN COOLING**

Multi-Air Flow Cooling uses multiple air vents along with deluxe shelving to ensure that an equal amount of chilled air reaches each shelf for quick and uniform cooling. This keeps your food fresh longer.

# Samsung® 5.8 CU. FT. Convection Slide-In Gas Range MODEL #: NX58H9500WS / AC

## Powerful, precise heat

The Samsung Gas Slide-in Range's 18 K Dual Power Burner provides powerful heat and precise control. It features two independent heating elements with power ranging from 18000 BTU to 700 BTU, so you can quickly go from a high heat to a true simmer for intense and even cooking. Or turn the burner up all the way to boil water in a flash and cook food faster.



## Step-by-step cooking guide

The Samsung Gas Slide-in Range has a digital dashboard that acts as your culinary assistant. You can control temperature and time settings by program recipes, select cooking functions and set clean settings easily with an intuitive step-by-step display. It lights your way to a delicious meal by illuminating each step along the way and eliminating the need to reach for the user manual

## Twice the choice

The Samsung Gas Slide-in Range has a Reversible Griddle, so you can enjoy all the benefits of healthy grilling, searing, sautéing and stir-frying on your cooktop. And because it's reversible you can cook using either a smooth or ridged surface, and create all sorts of grilled meals that look and taste really great! And you don't have to waste extra space on storing two griddles.

## Cooks much more

The Samsung Gas Slide-in Range has a massive 5.8 cu. ft. capacity oven – the largest on the market. So, if you're preparing a meal for a large family gathering or party, you can cook multiple dishes at once, like trays of cookies or various casserole dishes. Especially as it also has three oven racks – two wire and one gliding. And it can easily accommodate large items, like a big roast or holiday turkey.

## Safely stir-fry

The Samsung Gas Slide-in Range has a specially designed Wok Grate that lets you cook using a wok more efficiently and safely. Its circular design fits snugly around the burner, so your wok or other large pans are kept stable and won't accidentally tip over. It also ensures it's always in exactly the right place, so that heat is quickly and evenly distributed, and you can enjoy delicious stir fried food.

# Samsung® AquaBlast 39dBA Dishwasher with ZoneBooster and WiFi - Stainless Steel MODEL #: DW80R9950US/AC

## Spotless cleaning

AquaBlast™ Technology

Wash off stubborn leftover food and sticky residue without pre-rinsing. AquaBlast™ jets provide corner to corner coverage for superb cleaning.

## Remove stubborn food

ZoneBooster™ Technology - Remove stubborn leftover food effectively and get heavily soiled dishes clean in the ZoneBooster™ area. Zone Booster™ provides additional water stream to bottom left area for hard to clean pots and pans.



## Auto opens to dry

AutoRelease™ Drying

At the end of a cycle, the door automatically opens to circulate air and improve drying performance. And a fan on top creates a protective curtain of air to ensure your worktop isn't damaged.

## Use time effectively

Time Display - Use your time effectively and avoid waiting. The Time Display shows how long a program normally takes to complete. However, as the cycle progresses the remaining time can vary. So the estimated hours and minutes left will be continuously updated on the display. And you can get on with your day!

## SmartThings (Bixby)

SmartThings (Bixby) lets you remotely monitor and control your dishwasher using a smartphone App\*. You can easily check its status, turn it on/off, get cycle recommendations, select programs and options and receive diagnostics information.

## Load larger items

Flexible 3rd Rack - Make better use of the upper and middle racks. A Flexible 3rd Rack provides a convenient area for cutlery and kitchenware. It can also accommodate large utensils, simply by lowering its center section by 25mm. Or, when it's raised, it creates more space underneath for large cookware and plates.

## Unload effortlessly

Glide Railing System - Pull out a basket full of dishes much more easily and safely. The Glide Railing system creates less friction, so each rack slides in and out smoothly with hardly any effort, even if there are heavy pans. And its greater stability minimizes the risk of items falling out as there's less shaking

## Less noise at home

39dB Ultra Quiet system

Less noise and less disturbance with ultra quiet wash cycles.

# Samsung® 7.5 Cu.Ft. Electric Dryer with Steam Sanitize + in Platinum MODEL #: DVE45T6100P/AC

## Fitting Design - Closet Depth Fit

Give your home a sleek and modern look with a seamless design. This dryer has a shallower depth\*, so it fits within your existing laundry space without sacrificing any capacity thanks to our new, wider drum. Also, a new control panel design provides better visibility, so it is easy to use even when stacked.

## Freshen up clothes

The Steam Sanitize+ cycle removes 99.9% of germs and bacteria, over 95% of pollen, and kills 100% of dust mites.

## Dry more at once

Large Capacity (7.5 cu. ft.). Our large capacity, 7.5 cubic feet drum means you can dry more items in a single load and spend more time doing the things you love.



## Sensor Dry

Sensor Dry automatically optimizes the time and temperature of your drying cycle to protect your clothes from heat damage, while avoiding excess energy use.

## ENERGY STAR® CERTIFIED

ENERGY STAR® certified models exceed government standards to help conserve natural resources and save money on your utility bills.

## Smart Care

Skip customer service and troubleshoot issues straight from your smartphone. Smart Care interacts with your washer and dryer to perform an immediate diagnosis and offer quick solutions.\*

## Lint filter alert - Lint Filter Indicator

Minimize lint or fluff build up and help prevent blocking your dryer's air intake. The Filter Check Indicator light on the control panel will provide you with a helpful reminder when it is time to clean the filter for optimal performance.\*

The developer reserves the right to modify or change plans, specifications, features and prices without notice. Materials may be substituted with equivalent or better at the developer's sole discretion. Variable conditions occur throughout the development. All dimensions and sizes are approximate and are based on architectural measurements. This is not an offering for sale and such offer can only be made by Disclosure Statement and CPS

# Samsung® 4.5 cu. ft. Front Load Washer with Steam in Platinum MODEL #: WF45R6100AP/US

## Gently Remove Stains - Steam

The power of steam lets you gently remove stains without any time-consuming pretreatments. Steam is released from the drum so every item in the load is thoroughly saturated, ensuring a deep clean.

## Freshen up clothes

The Steam Sanitize+ cycle removes 99.9% of germs and bacteria, over 95% of pollen, and kills 100% of dust mites.

## Fit More for Fewer Loads

Our large capacity, 4.5 cubic feet drum means you can wash more items in a single load and spend more time doing the things you love.



## Quiet Washing Anytime, Any Place - VRT Plus™ Technology

Do your laundry without disturbing anyone at any time and in any place. Innovative VRT Plus™ technology reduces noise and vibration for quiet washing.

## ENERGY STAR® CERTIFIED

ENERGY STAR® certified models exceed government standards to help conserve natural resources and save money on your utility bills.

## Smart Care

Skip customer service and troubleshoot issues straight from your smartphone. Smart Care interacts with your washer and dryer to perform an immediate diagnosis and offer quick solutions.\*

## Keep your Washer - Fresh and Clean with Self Clean+

Keep your washer fresh and clean with Self Clean+ technology, which eliminates 99% of bacteria\* that can form in any washer drum. Self Clean+ will notify you every forty wash cycles when it is time for a cleaning.

**KITCHEN**



**REGINOX  
KITCHEN SINK  
MODEL:  
RDU1831/7**



**MOEN ALIGN  
KITCHEN FAUCET  
MODEL: 7565**

**TORYLS  
LASALLE  
VINYL  
FLOORING**



**TORYLS  
HENDRIE  
VINYL  
FLOORING**

**WHITE QUARTZ  
COUNTERTOPS**



**WHITE  
QUARTZ WITH  
GREY BLUE  
VEINING -  
BACK SPLASH**



The developer reserves the right to modify or change plans, specifications, features and prices without notice. Materials may be substituted with equivalent or better at the developer's sole discretion. Variable conditions occur throughout the development. All dimensions and sizes are approximate and are based on architectural measurements. This is not an offering for sale and such offer can only be made by Disclosure Statement and CPS.

**BATHROOM**



**MAAX TSEA PLUS  
TUB/SHOWER  
MODEL: 105674**



**MAAX HALO  
SHOWER DOOR  
MODEL: 138997**



**AMERICAN STANDARD  
FLO-WISE TOILET  
MODEL:2794 104**



**MOEN RINZA  
SHOWER AND BATH  
TRIM SET MODEL:  
82628**



**B3SQUARE  
SHOWER BASE  
MODEL: 420006**



**MOEN ARLYS  
BATHROOM  
FAUCET  
MODEL: 84770**



**DUVAL BATHWORKS  
GRACE  
BATHROOM SINK  
MODEL:UL2014**

# FINISHES

**TORYLS LASALLE  
VINYL FLOORING**



**TORYLS HENDRIE  
VINYL FLOORING**



**DURADECK  
FLINT GREY**



**STRLINE PATIO  
DOORS  
MODEL: 8500**



**EUROSTAR  
EXTERIOR DOOR  
MODEL: 2501**



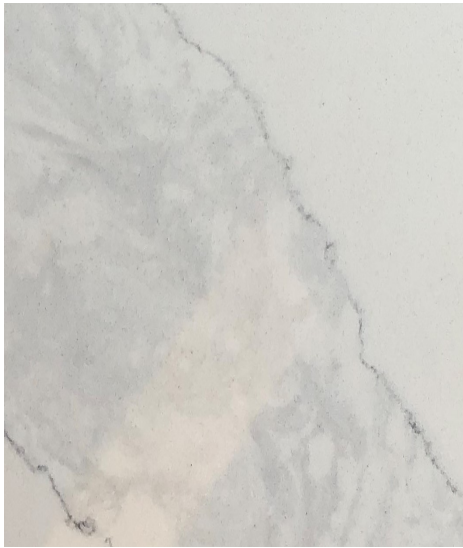
**JELDWEN BIRKDALE  
INTERIOR DOORS**



**TECNICA CIRCA  
INTERIOR  
DOOR  
HANDLES**



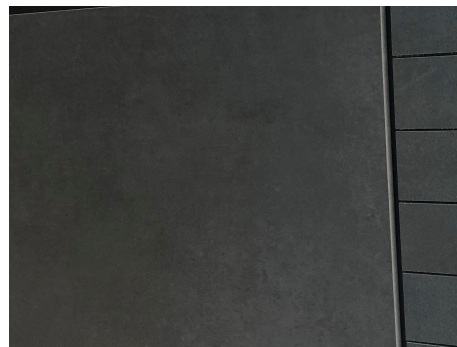
# FINISHES



BACK SPLASH:  
WHITE QUARTZ  
WITH GREY BLUE  
VEINS



JULIAN WHITE  
TILES IN  
BATHROOMS



JULIAN GREY  
ABSOLUTE TILES  
IN BATHROOMS

# LIGHTING

**KUZCO DOROTHY 492710**



**KUZCO WALL  
SCONCE - JANE -  
VL62224**



**KUZCO EXTERIOR  
EW4405**



**MAXIM WAFER LED  
57722**



**LITELINE RECESS  
LED 4" SLM4**

# **INFRASTRUCTURE**



**DETTSON ALIZE HEATPUMP  
MODEL: COND-09-01 MIDDLE UNITS  
MODEL: COND-12-01 END UNITS**



**DETTSON CHINOOK GAS FURNACE  
MULTI-POSITION EFFICIENCY CONDENSING  
MODEL: CC15-M-V MIDDLE UNITS  
MODEL: C30-M-V END UNITS**



**NAVIEN PREMIUM CONDENSING  
TANKLESS WATER HEATERS**



**LEVITON VEHICLE ELECTRIC  
CHARGER Evr-Green® Level 2  
EV Charging Stations**